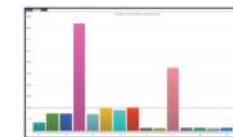


This product is a color-screen portable coating thickness gauge with high-definition display, which can quickly, non-destructively and accurately measure non-magnetic coating thickness on magnetic metal substrates and non-metallic coating thickness measurement on non-magnetic metal substrates. At the same time it can automatically identify magnetic metal substrate and non-magnetic metal substrate, and is widely used in manufacturing, metal processing industry, chemical industry, commodity inspection and other testing areas.



2.line chart



1.Bar graph



3.form

### Three data representations

Function	WT2100	WT2110	WT2110B
Menu operation and colo-screen HD display	✓	✓	✓
Fe (magnetic metal)	✓	✓	✓
NFe (non-magnetic metal)	×	✓	✓
Three calibration modes: basic, offset, zero calibration	✓	✓	✓
Metric/imperial unit and storage function	✓	✓	✓
Screen rotation, charge protection, multi-interface displays,screen brightness selection	✓	✓	✓
Automatic shutdown	✓	✓	✓
Bluetooth function (used with APP)	×	×	✓
USB data transfer (use with PC software)	×	×	✓
USB charging function	×	×	✓



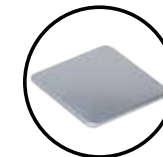
USB cable



adapter



Iron base



Aluminum base



Calibration sheet

### Applicable system



Android



windows



IOS



USB interface

Test probe

Specification	WT2100	WT2110	WT2110B
Measurement range	0~1800um/0~70.9mil/0~1.8mm	0~1500um/0~59mil/0~1.5mm	0~1500um/0~59mil/0~1.5mm
Resolution	( 0.1um(<100um) 1um(≥100um))/0.1mil/0.001mm	( 0.1um(<100um) 1um(≥100um))/0.1mil/0.001mm	( 0.1um(<100um) 1um(≥100um))/0.1mil/0.001mm
Measurement error	≤150um:±5um >150um:±(3%H+1um)	≤150um:±5um >150um:±(3%H+1um)	≤150um:±5um >150um:±(3%H+1um)
Minimum diameter of magnetic metal substrate	12mm	12mm	12mm
Minimum thickness of magnetic metal substrate	0.5mm	0.5mm	0.5mm
Minimum radius of curvature for magnetic convex substrate	2mm	2mm	2mm
Minimum radius of curvature for magnetic concave substrate	11mm	11mm	11mm
Minimum diameter of non-magnetic metal substrate	×	50mm	50mm
Minimum thickness of non-magnetic metal substrate	×	0.5mm	0.5mm
Battery	3x1.2V NiMH battery (weight 36.5g) or 5V1A power adapter		
Size	70.30*38.6*149.59mm		
Weight	136.9(including battery)		